

# #30 Restored with an Implant



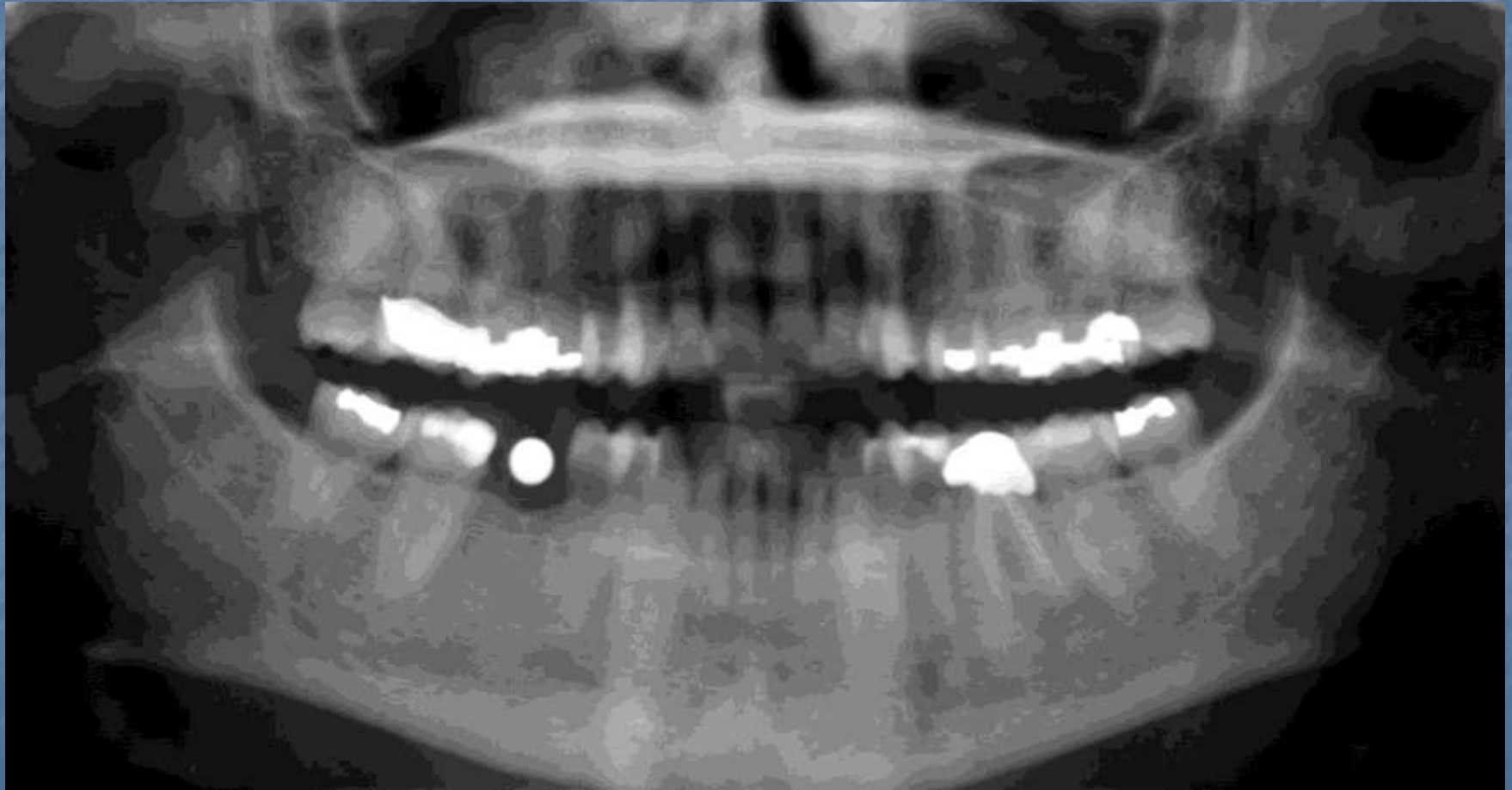
# Pre-Op Occlusal View



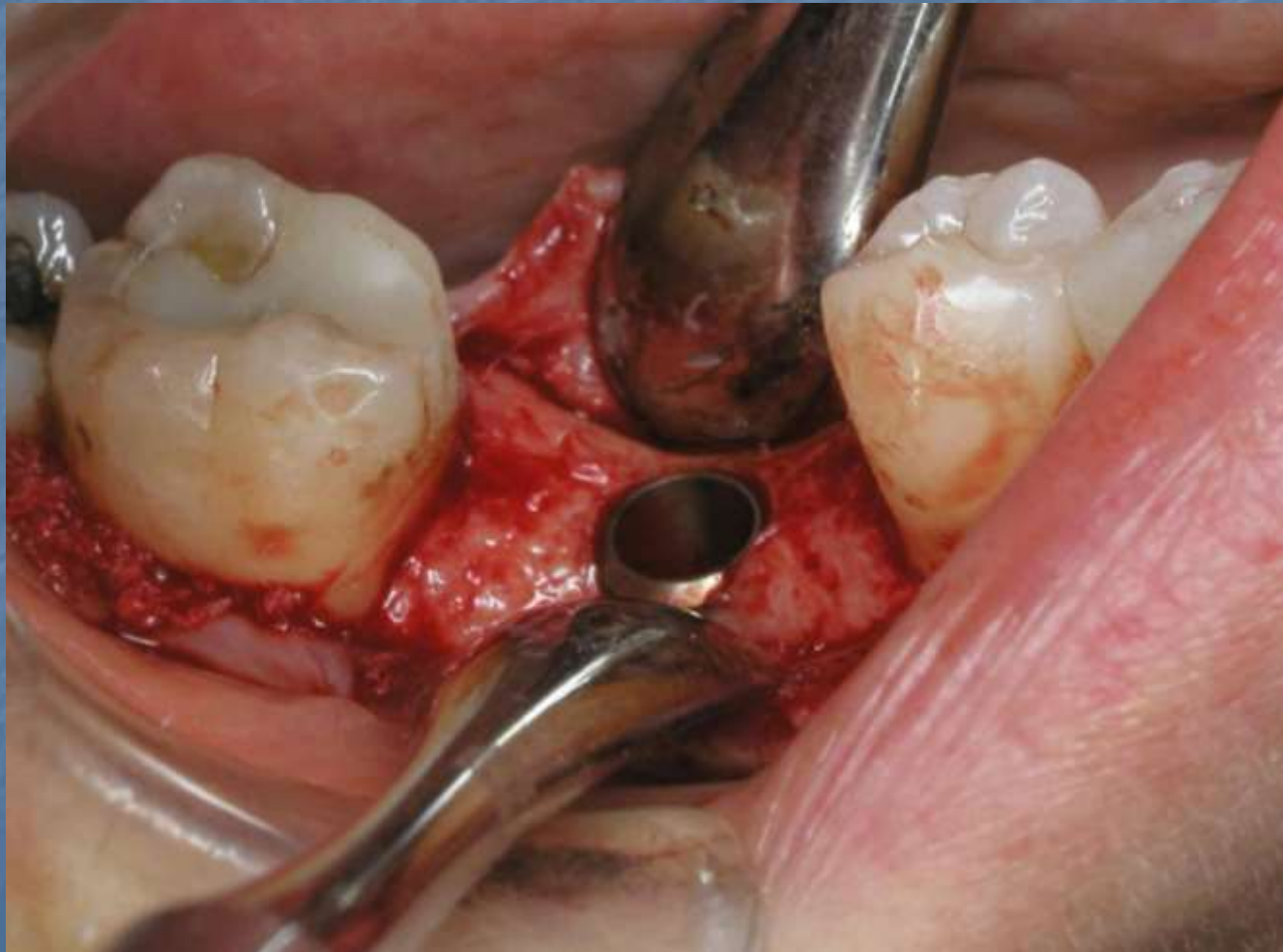
# Pre-Op Buccal View



# Pre op Panorex with 5mm Calibration Ball



# 5.0 Astra implant placed – final surgical position before healing cap is placed and tissue closed



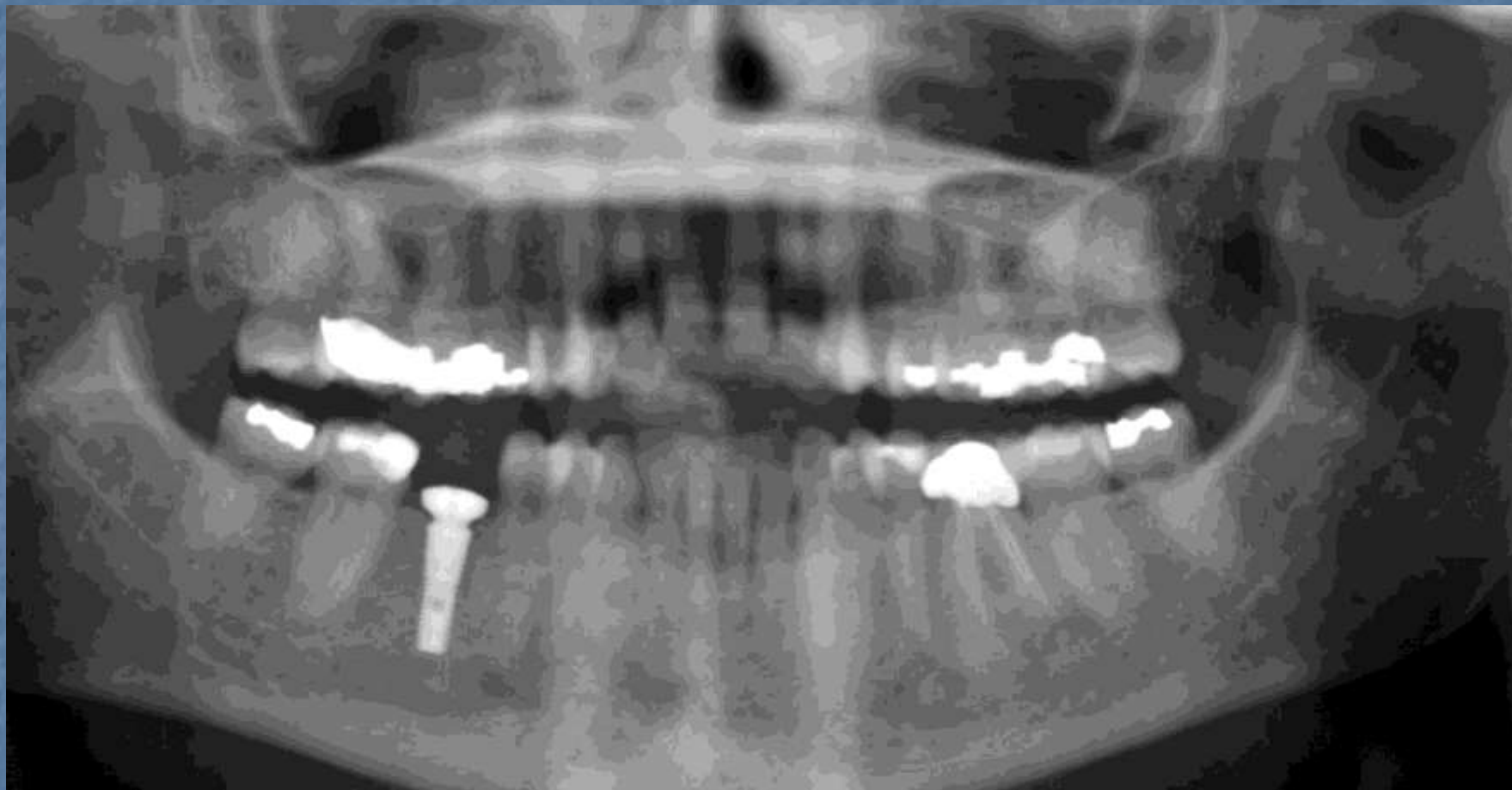
# Day of Surgery Healing Cap Placement Buccal View



# Day of Surgery Healing Cap Placement Occlusal View



# Post-Op Panarex with 7.0 Healing Cap on Day of Surgery





# One Week Post-Op – Buccal View



# One Week Post-Op – Occlusal View



# 11 Weeks Post-Op – Buccal View



# 11 Weeks Post-Op – Occlusal View



# 11 Weeks Post-Op – Occlusal View Immediately after Healing Cap Removal



# 11 Weeks Post-Op – Occlusal View Of Direct Abutment



# 11 Weeks Post-Op – Buccal View Of Direct Abutment



# 14 Weeks – Crown Insert





# 14 Weeks – Crown Insert



# 14 Weeks – Crown Insert



# 14 Weeks – Crown Insert Panarex



# 14 Weeks – Crown Insert Panarex

